

AVAILABLE SPACES FOR LEASE

153 SF to 5,900 SF
Retail & Restaurant Space Available

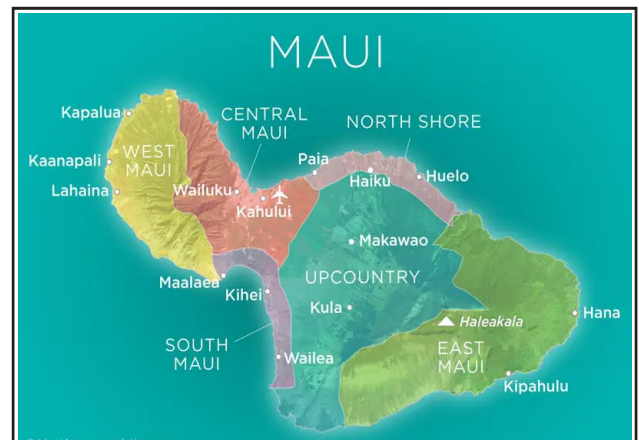


RENTAL RATES

- **Base Rent: Negotiable**
- **Advertising/Marketing: \$75/mo. (kiosks)**
\$0.08 PSF (restaurant)
- **Flexible terms available**
- **Est CAM (2026): \$3.60 PSF/month**

PROPERTY FEATURES

- **The center is comprised of over 50 retail shops & 14 restaurants/bars in the growing town of Kihei**
- **Tourist shopping destination**
- **On site storage facility (additional fee)**
- **On-site security team**
- **Great South Maui location in Kihei - popular area for locals and tourists**



DEMOGRAPHICS

Maui Island Population (2022 census):	154,100
South Kihei Population	27,921
Maui Households	57,355
Visitor arrival (2022)	2, 910,782

FOR MORE INFORMATION, CONTACT:

EVAN J. KETTER (B)
RB - 24112

OFFICE: (808) 879-5000

DIRECT: (808) 666-5398

CELL: (808) 421-9118

E-MAIL: EKETTER@MWGROUP.COM

The information contained herein comes from sources deemed to be reliable; however, no representation or warranty is made by MW Commercial Realty, Inc. and said information is subject to change without notice. No subagency offered.



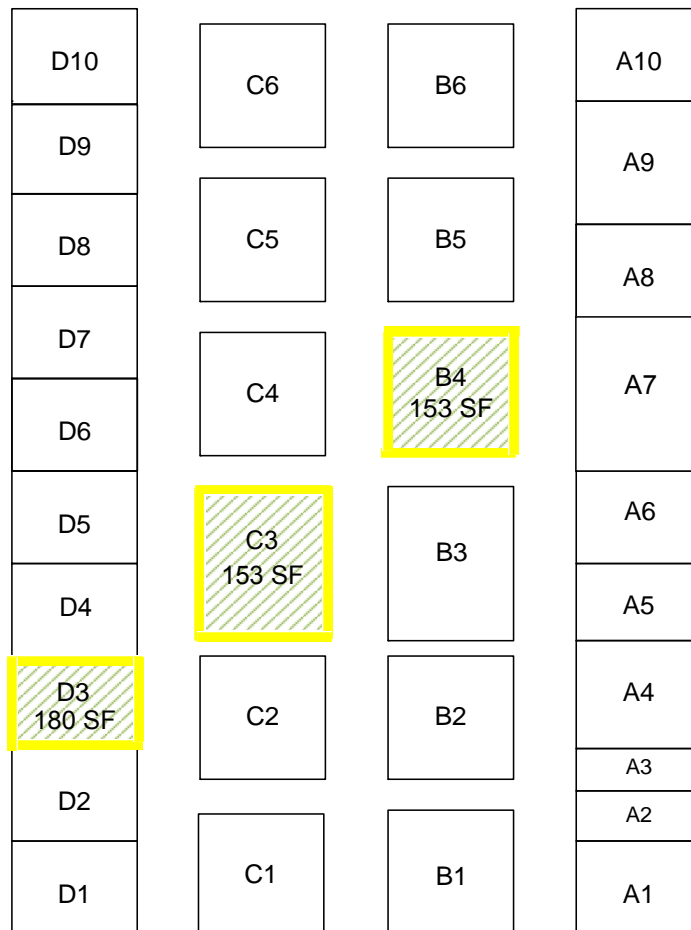
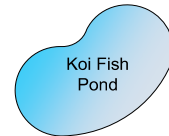
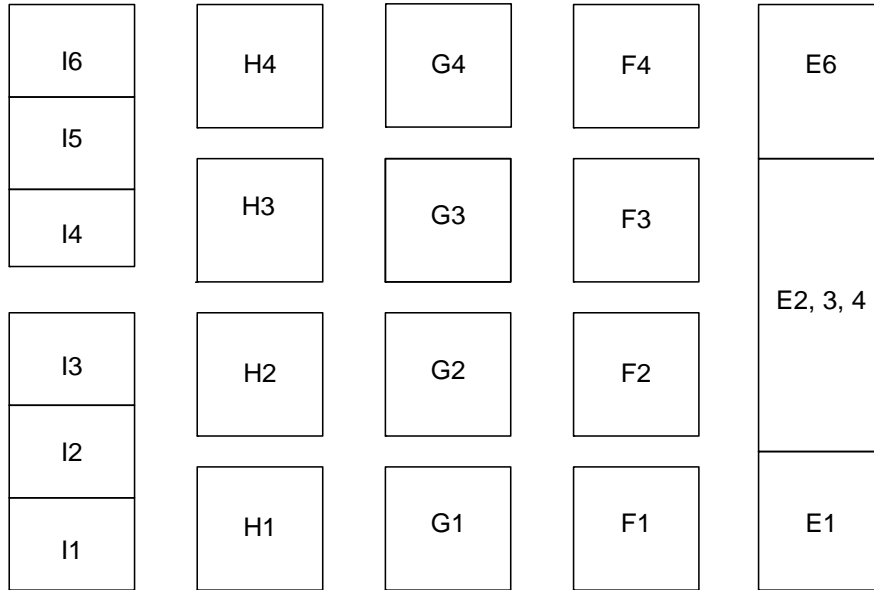
**MW Commercial
Realty, Inc.**
Real Estate Brokerage

1280 S. Kihei Road | Ste. 224 | Kihei, HI 96753
P: (808) 879-5000 | F: (808) 879-3999 | Corp. Lic. # RB-16265
www.mwcommercialrealty.com

KIHEI KALAMA VILLAGE

PAVILION MAP

1941 S. Kihei Rd., Kihei, HI 96753
 TMK: (2) 3-9-003-007



The information contained herein comes from sources deemed to be reliable; however, no representation or warranty is made by MW Commercial Realty, Inc. and said information is subject to change without notice. No subagency offered.



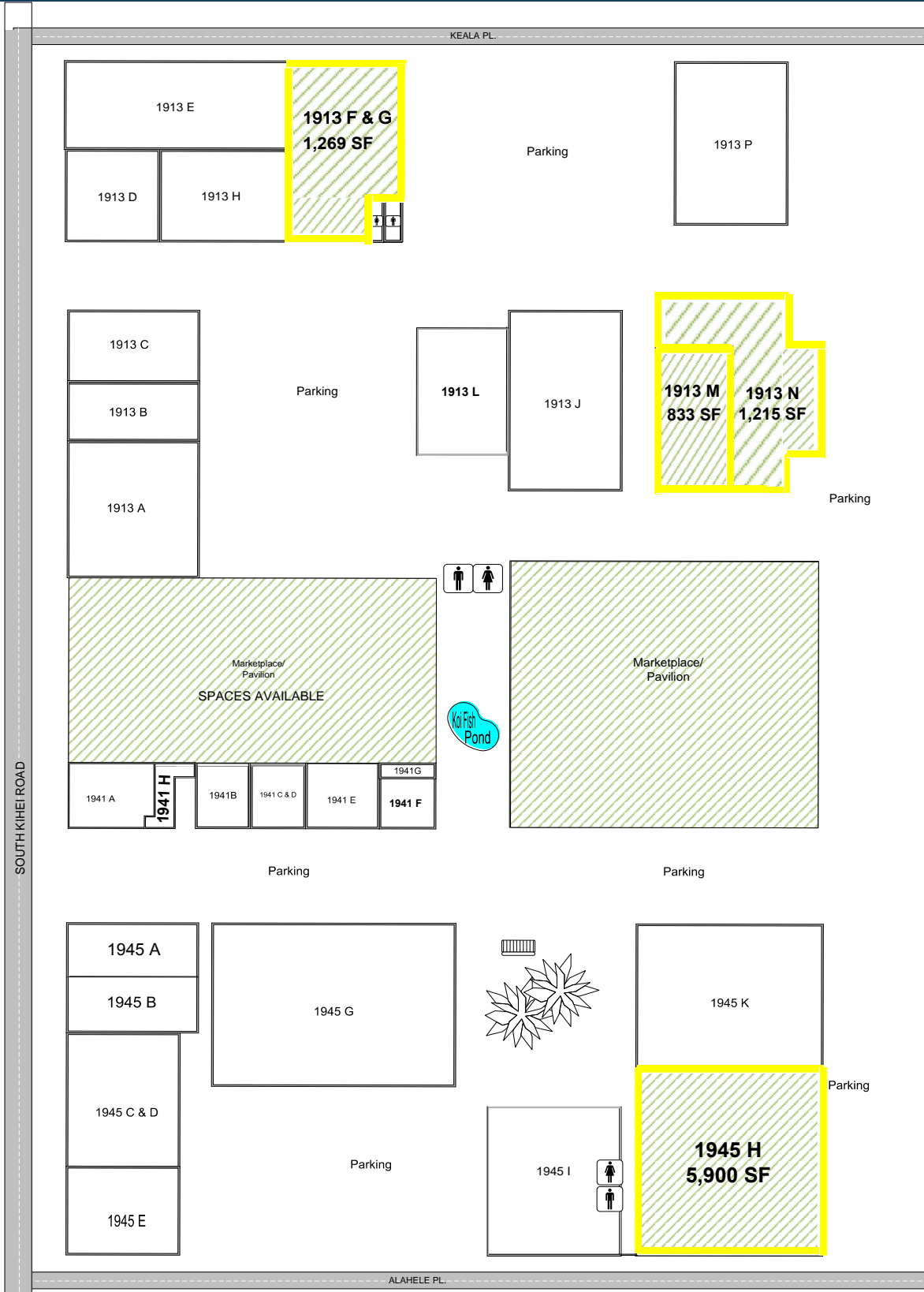
MW Commercial Realty, Inc.
 Real Estate Brokerage

1280 S. Kihei Road | Ste. 224 | Kihei, HI 96753
 P: (808) 879-5000 | F: (808) 879-3999 | Corp. Lic. # RB-16265
www.mwcommercialrealty.com

KIHEI KALAMA VILLAGE

SITE MAP

1941 S. Kihei Rd., Kihei, HI 96753
 TMK: (2) 3-9-003-007



The information contained herein comes from sources deemed to be reliable; however, no representation or warranty is made by MW Commercial Realty, Inc. and said information is subject to change without notice. No subagency offered.



MW Commercial Realty, Inc.
 Real Estate Brokerage

1280 S. Kihei Road | Ste. 224 | Kihei, HI 96753
 P: (808) 879-5000 | F: (808) 879-3999 | Corp. Lic. # RB-16265
www.mwcommercialrealty.com

AREA MAP

Anchor Tenants include:
Kihei Cafe, Three's Bar & Grill, CocoNene, and Kai Aloha



The information contained herein comes from sources deemed to be reliable; however, no representation or warranty is made by MW Commercial Realty, Inc. and said information is subject to change without notice. No subagency offered.



**MW Commercial
Realty, Inc.**
Real Estate Brokerage

1280 S. Kihei Road | Ste. 224 | Kihei, HI 96753
P: (808) 879-5000 | F: (808) 879-3999 | Corp. Lic. # RB-16265
www.mwcommercialrealty.com